

TuffTrak[®]

Ground Protection Solutions

Temporary Access & Ground Protection



Checkers Safety Group is committed to effectively managing environmental performance in order to minimise the impact of our business on the natural environment.



About Checkers®

As designers, manufacturers and suppliers of temporary access and ground protection solutions, we aim to provide our customers with innovative 'best in class' products delivering the highest levels of performance, value and safety at all times.

We are committed to ensuring our products meet the ever changing and demanding conditions within the civil engineering, transmission, renewable energy, oil & gas, infrastructure, ground work and leisure event industries.

Benefits of our products

Our solutions are designed to meet health and safety regulations, avoid environmental damage and save time and project costs. Sustainability and environmental protection are both Checkers policies of effectively managing environmental performance in order to minimise the impact of our business on the natural environment and the community at large. Extending this policy to all our workplaces, employees and others affected by our activities, many of our products are manufactured from 100% recycled plastics and waste materials at 'end of life' and diverting useful materials away from landfill.



TuffTrak® Standard



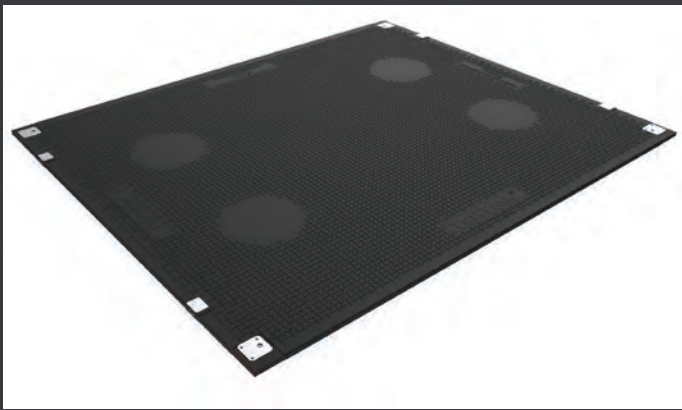
Size : 3000mm x 2500mm x 47mm
Weight : 295kg

TuffTrak® XL



Size : 4092mm x 2035mm x 54mm
Weight : 390kg

TuffTrak is the ultimate heavy duty road mat for temporary roadways and work areas with a weight loading to 150* tonnes, dependent on ground conditions. TuffTrak is the market's leading 100% solid compression moulded mat and is chemically inert making it ideal for use on eco sensitive sites. Being solid means that it cannot be punctured - avoiding the intake of liquids and reducing the threat of invasive species or cross contamination between sites. TuffTrak incorporates dual grip surfaces, delivering optimal rugged grip from Checkers unique chevron traction® surface and a low profile pedestrian friendly surface ideal for use on work pads and walkways.



TuffTrak® Lite

TuffTrak Lite combines the market leading performance associated with TuffTrak and providing operational and financial benefits in handling and installation due to a vastly reduced weight.

The rugged, yet pedestrian friendly traction surface on TuffTrak Lite reduces slippage, helping deliver forward traction for efficient and safe use with heavy plant, vehicles and site personnel making it ideal for use where temporary roadways and work areas are required but smaller manhandleable mats cannot handle the heavy plant or equipment.

Size : 3000mm x 2500mm x 32mm
Weight : 185kg

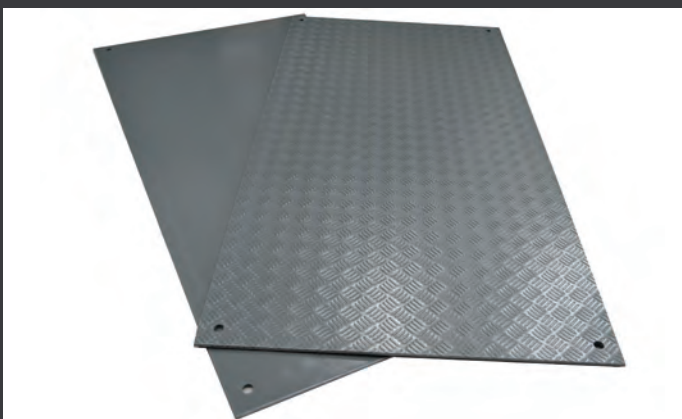


EuroMat®

Supporting loads up to 80 tonnes, EuroMat is the ultimate heavy duty man-handleable mat for temporary roadways and work areas. EuroMat is essential for the construction, civil engineering and ground work industries.

Made from tough 100% recycled or virgin high density Polyethylene (HDPE), EuroMat is the market leader for temporary access and ground protection over soft or sensitive ground. EuroMat® significantly reduces damage to heritage and eco-sensitive areas, avoiding the need for reinstatement once the project is complete.

Size : 2400mm x 1200mm x 12mm
Weight : 35kg



Economat™ MB

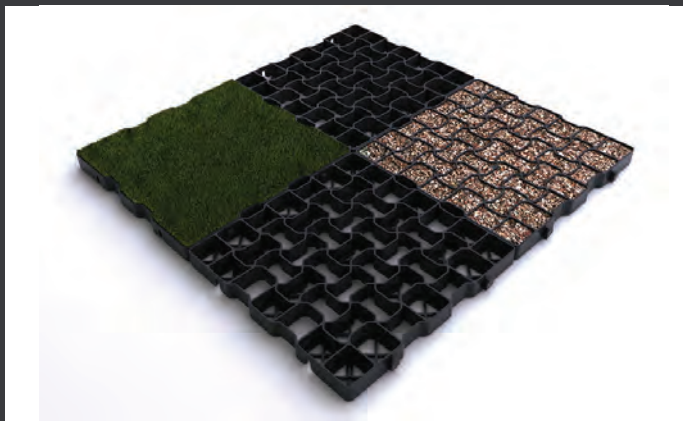
Economat MB has been specifically developed as an effective and efficient alternative to construction plywood providing a low cost, easy to deploy and reusable temporary access and ground protection solution.

Economat MB is resistant to adverse weather making it ideal for use in snow, ice, frost or damp conditions. Made from 100% recycled Low Density Polyethylene, Economat MB can be re-used time and again providing considerable long term cost savings over plywood.

Size : 2410mm x 1200mm x 11mm
Weight : 32kg



Size : 2440mm x 1200mm x 12mm
Weight : 43.6kg



Size : 495mm x 495mm x 40mm
Weight : Standard - 1.1kg per grid 4.4kg/m²
Weight : Premium - 1.6kg per grid 6.4kg/m²



TrenchSafe™

- Made from single piece, glass reinforced SMC and subject to ISO9001 accredited quality control
- Strengthened ribbed underside - Pre-pressed anchor points at each corner
- Easy to clean and maintain
- DETR Safety at Streetworks and Roadworks Code of Practice compliant
- BS EN 124 and Safe Working Practise compliant

RubbaMat™

RubbaMat is a lightweight manhandleable mat ideal for temporary access and ground or surface protection in areas where a softer surface is required or in areas where underlying conditions are better suited to more flexible matting.

RubbaMat is made from tough, heavy duty, 100% SBR rubber which significantly reduces damage to delicate surfaces, such as decorative stone paving or kerb stones and RubbaMat's design is particularly suited for use in equestrian or livestock environments where a softer mat with rugged grip is required.

GeoGrid®

GeoGrid® cellular paving system enables the fast and efficient implementation of ground reinforcement and stabilisation. GeoGrid's unique patented design offers the combination of excellent cellular strength and weight load capability (up to 500 tonnes/m²) whilst allowing for optimal expansion and contraction avoiding the risk of surface deformation in hot or cold climates. The cellular design of the grids allows the dispersion of excess rain or flood water which makes it ideal for integration with Sustainable Urban Drainage Systems (SUDS) and in areas prone to flooding or with water dispersion problems.



Outrigger Pads

- Made from 100% recycled polyethylene
- Do not absorb water
- Long lasting - extended life compared to other materials
- For use with crane and aerial work platform industries.
- Essential component of the hire industry.
- Stable load platform - preventing ground damage
- Handy carry handles make them easy to transport
- Size options to suit wide option of weight loads